

# Economical Weighbridge LoadCell

## Easy Installation & low maintenance



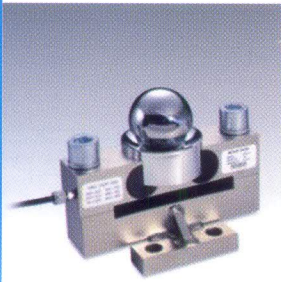
### Reliable Performance

METTLER TOLEDO make SBD load cells provide reliable weighing for heavy capacity applications such as weighbridges. They are designed to perform in the toughest Industrial environments and most forbidding Climates.



### Easy Installation

Very fast and economical installation, Allowing the weighbridge up & running in no time.



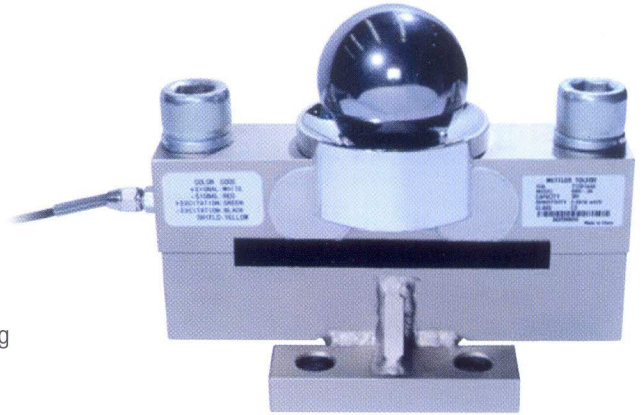
### Trouble Free Operation

SBD load cells designed & tested rigorously to provide longer & maintenance free lifecycle.



### Faster ROI

Comparatively lower cost of ownership, without sacrificing the high performance, ensures owners to recover their investment quickly.



### Features:

- Double-ended shear beam load cell
- High accuracy
- Easy installation
- Excellent durability
- Excellent compatibility
- Alloy steel with nickel plated



### Application Segments :

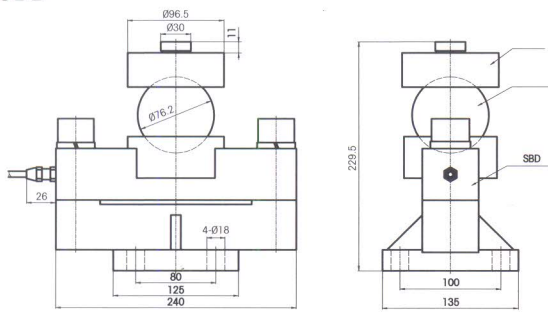
- Public Weighbridge
- Warehouse
- Sugar & Rice Industry
- Agri & cotton Industry & Many More...

## Technical specifications

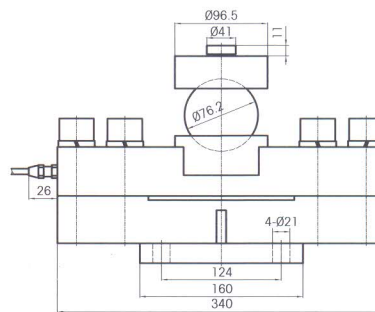
### Specification

Rated capacity	t	10,20,25,30,40,50
Rated output	mV/V	2 ± 0.002
Non repeatability	%R.C.	≤ 0.01
Hysteresis	%R.C.	≤ 0.02
Non linearity	%R.C.	≤ 0.02
Creep(30min)	%R.C.	≤ 0.02
Zero balance	%R.C.	≤ 1
Temp. Compensated range	°C	-10~+40
Operating temp. Range	°C	-20~+65
Temp. coefficient on output %Load	%R.C./ °C	≤ 0.002
Temp. coefficient on zero balance	%R.C./ °C	≤ 0.002
Input resistance	Ω	772 ± 4
Output resistance	Ω	700 ± 1
Insulation resistance	MΩ	≥ 5000(50V DC)
Recommended voltage	V(DC/AC)	5~15
Max. excit. voltage	V(DC/AC)	20
Safe overload	%R.C.	150
Ultimated overload	%R.C.	300
Protection class		IP67
Cable length	m	13

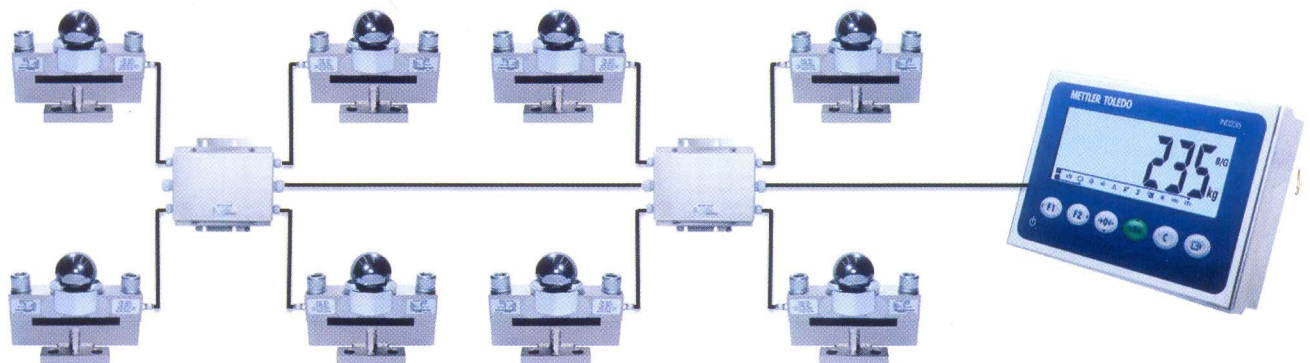
### SBD



SBD 10, 20, 25, 30†



SBD 40†



[www.mt.com](http://www.mt.com)

For more information



### Mettler-Toledo India Private Limited

Amar Hill, Saki Vihar Road, Powai, Mumbai - 400072

• Tel : 91 - 22 - 4291 0111 • Fax : 91 - 22 - 2857 5071  
 • Email : sales.mtin@mt.com • Website : www.mt.com

Service Toll Free number: 1800 22 8884

Service feedback: servicecare.mtin@mt.com

CIN : U51900MH1998PTC114109

